

Aquatic Invasive Species Management

The lock at Rapide Croche is non-functional and is the site of a fixed barrier constructed in 1988 to prevent the upstream migration of sea lamprey into the Lake Winnebago system. As specified in State Statute 237 a permanent barrier will remain at the Rapide Croche site. In order for boats to traverse the Lower Fox River a boat lift incorporating an aquatic invasive species (AIS) inspection and cleansing process will be required.

The Fox River Navigational System Authority has prepared an AIS Control and Monitoring Plan for the Rapide Croche Boat Transfer Station. The goal of this plan is to prevent the upstream spread of aquatic invasive species and safely transfer boats at the Rapide Croche Lock Barrier.

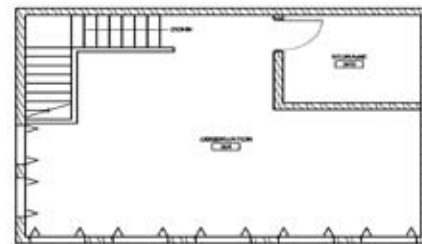
The plans objectives are:

1. Maintain the effectiveness of the lamprey barrier currently in place at the Rapide Croche Lock site.
2. Move boats overland in an environmentally safe manner without moving AIS.
3. Ensure that the boat cleansing process at the Rapide Croche Transfer Station meets or exceeds the Wisconsin State and Aquatic Task Force recreational boating guidelines for AIS prevention.
4. Monitor for the presence of fish and invertebrate AIS above and below the Rapide Croche transfer station.
5. Educate system users about AIS prevention.

Proposed Visitor/AIS Education Center Building



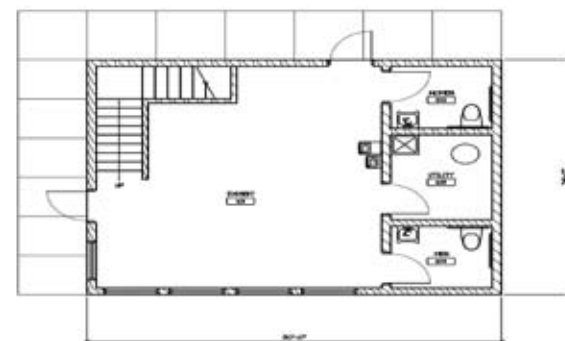
West Elevation
SCALE 1/8" = 1'-0"



Second Floor Plan
SCALE 1/8" = 1'-0"



South Elevation
SCALE 1/8" = 1'-0"



First Floor Plan
SCALE 1/8" = 1'-0"

PRELIMINARY
NOT FOR CONSTRUCTION
OR CONTRACTING

For more information contact:

Fox River Navigational System Authority 1008 Augustine Street Kaukauna, WI 54130
(920) 759-9833 E-mail: lock269735@sbcglobal.net www.frnsa.org (under construction)

*Background photo from cover taken from Microsoft Bing Maps - www.bing.com/maps/



Prepared April 7 2010 by:
East Central Wisconsin
Regional Planning Commission
400 Alnapp Street
Menasha, WI 54952
www.eastcentralrpc.org

Rapide Croche Boat Transfer Station AIS Barrier



Fox River Navigational
System Authority

